

SAFE SLEEP TASK FORCE (SSTF)



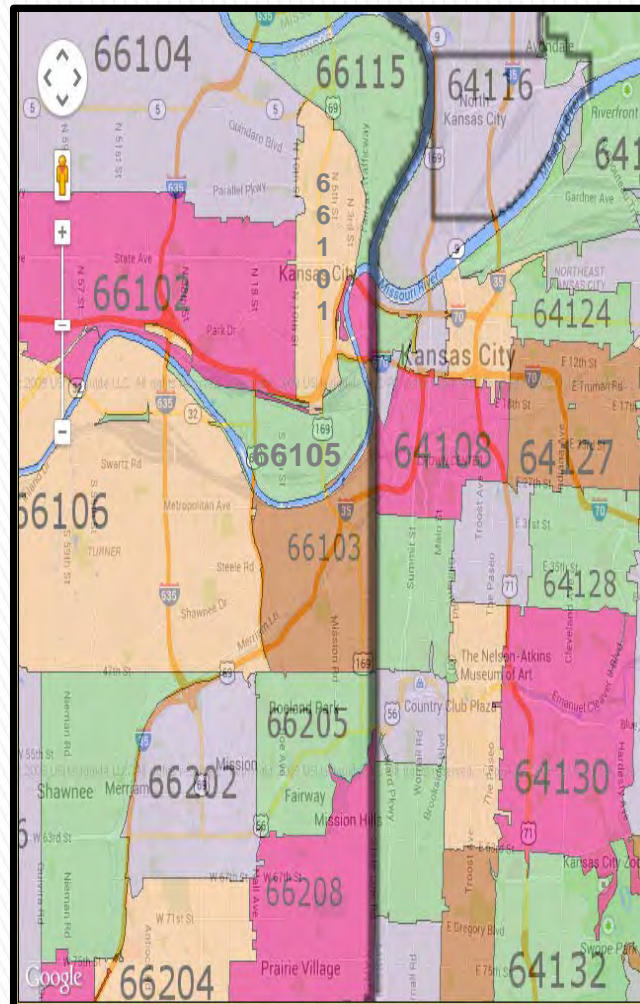
Mary Jean Brown, MS, RNC
FIMR Coordinator
Mother & Child Health Coalition

MCHC July 28, 2017 Quarterly Meeting

Infant Mortality in KC

Sadly, in certain ZIP codes within the Kansas City Metro babies are dying before their first birthday at rates two & three times higher than average.

KCKS ZIP Code	IMR
66101	11.7
66102	7.2
66103	6.5
66104	13.7
66105	17.1
66106	6.1
66109	7.6



KCMO ZIP Code	IMR
64106	11.7
64109	12.9
64110	10.8
64111	10.8
64112	3.2
64124	6.8
64126	7.8
64127	8.7
64128	15.5
64130	15.3
64132	20.8

2005-2009 data
 Kansas Department of Health and Environment
 Bureau of Epidemiology and Public Health
 Informatics

2005-2009 data/2011 KCMO Health Assessment

What is the Safe Sleep Task Force (SSTF)?

- ▶ Derived from Case Review Team (CRT)
- ▶ Original members reviewing same cases;
 - MO Depart of Social Services
 - SIDS Resources Inc.
 - MCHC

The logo for the Missouri Child Fatality Review Program (FLMR) features the letters 'FLMR' in a bold, black, sans-serif font. The letter 'L' is stylized with a white silhouette of a child's head and shoulders inside it.The logo for SIDS Resources features the word 'SIDS' in a large, black, serif font with a small red diamond above the 'I'. Below it, the word 'RESOURCES' is written in a smaller, black, sans-serif font.

MISSOURI CHILD FATALITY REVIEW PROGRAM 2015

PREVENTING CHILD DEATHS IN
MISSOURI

THE MISSOURI CHILD FATALITY REVIEW
PROGRAM

ANNUAL REPORT FOR 2015

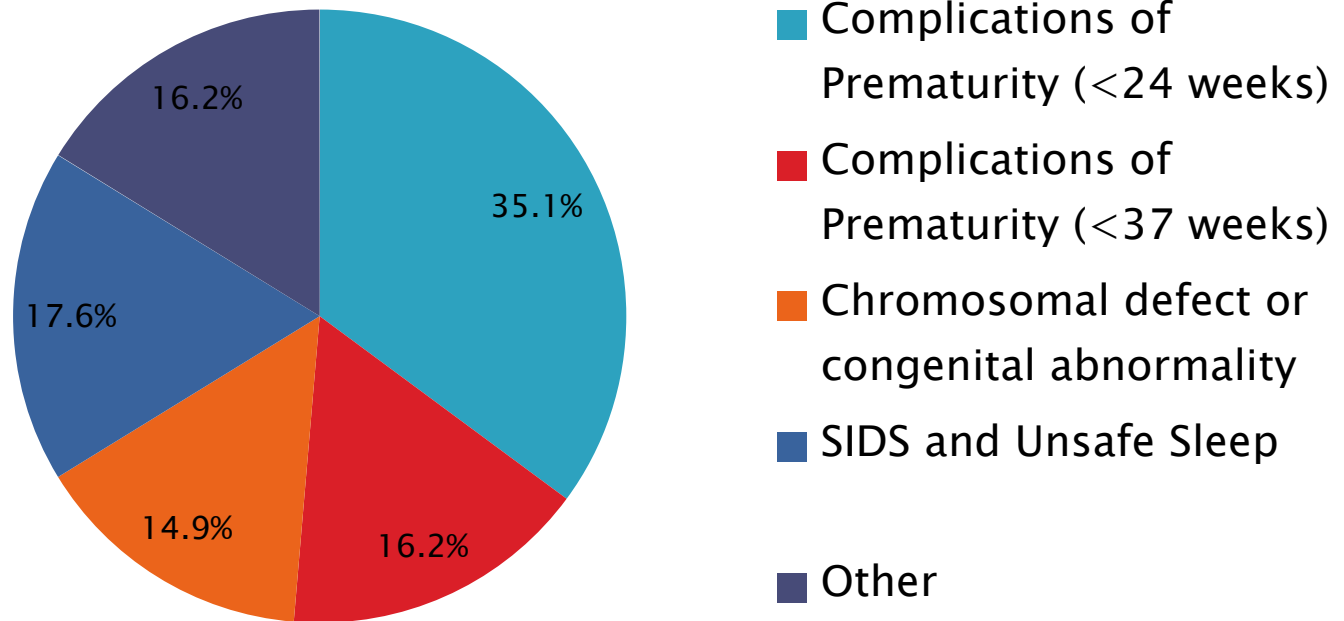


Missouri Department of Social Services
State Technical Assistance Team
PO Box 259
Jefferson City, Missouri 65102-0259
(816) 437-1526
(672) 781-4980
<http://www.dss.mo.gov/stat/mefrp.htm>

Published December 2016

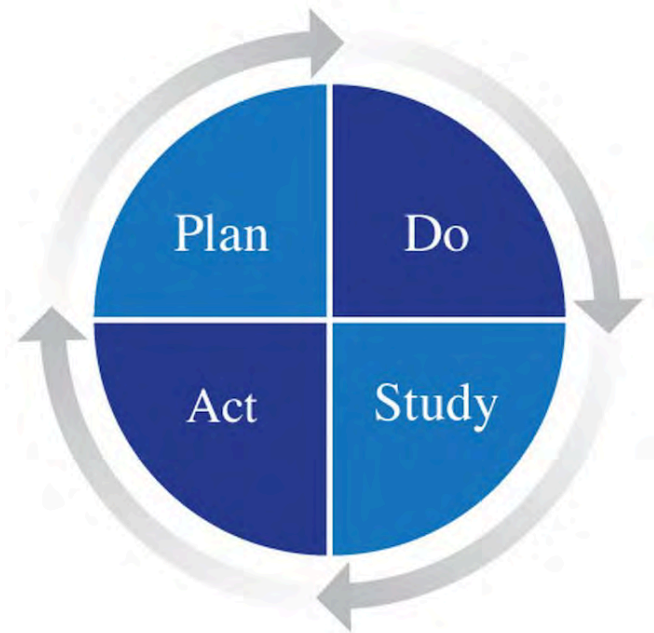
What Can We Do About This?

Causes of Infant Death in FIMR Cases



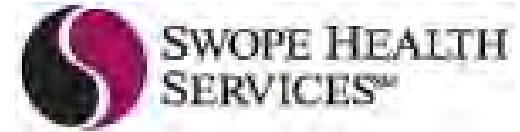
Using the PDSA model

- ▶ Discussed with colleagues what things we can do.
- ▶ Started with holding classes at local Safety Net Clinics.
 - Struggled with getting clinic participants to follow-up after one time class.
- ▶ Reassessed asked what other agencies had built in trust and ongoing relationships.
- ▶ We invited agencies to be trained in Safe Sleep curriculum.



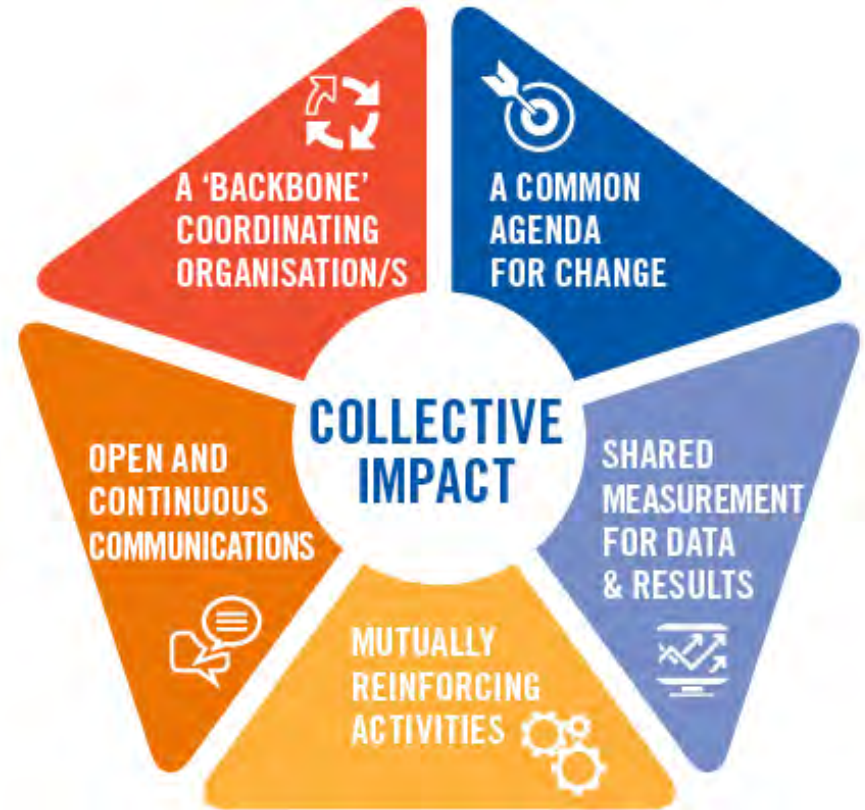
MCHC Safe Sleep Task Force Partners (2017)

Turner  House
Children's Clinic



SSTF Creating Collective Impact

- ▶ **Common Agenda:**
 - Safe Sleep Education
- ▶ **Shared Measurement:**
 - Shared database
- ▶ **Mutual Activities:**
 - Shared Documents
 - Common message
- ▶ **Continuous Communication:**
 - SSTF Partner Agencies must attend 6/11 monthly meetings
- ▶ **Backbone Organization**
 - MCHC
 - Houses database, funding, etc.



Make a Referral

www.mchc.net

Friday, June 23, 2017
REGISTER ONLINE



Mother & Child Health Coalition Programs

MCHC programs address reducing infant mortality and providing better care for children in the Kansas City area through prevention, intervention and education.

[Read more](#)



Kansas City Healthy Start Initiative

Healthy Start offers services and support for mothers, children and their families before, during and after pregnancy. Give your baby a Healthy Start.

[Read more](#)



Fetal & Infant Mortality Review

The FIMR program focuses on reducing infant mortality and health care disparities in the greater Kansas City community area.

[Read more](#)



SAFE Kids Metro Kansas City

The Safe Kids Metro KC program works with community partners to prevent accidental injury and death to children 19 and under.

[Read more](#)



Mid America Immunization Coalition

MAIC works to ensure that all of greater Kansas City's children, adolescents and adults will be protected against vaccine-preventable diseases.



Safe Haven for Newborns

MCHC supports the Safe Haven for Newborns campaign in Missouri and Kansas by providing information and resources to the community.

Event Calendar

JUN 12 Mon	3:00 pm MCHC Board of Directors Meeting @ Research Medical Center Board Room
JUN 13 Tue	9:00 am Pregnancy, Infant & Child Health...
JUN 20 Tue	9:00 am CANCELED - Breastfeeding - Strat... @ Conference Call

[Add](#) [View Calendar](#)

Get Involved!

[JOIN TODAY!](#)

[MAKE A DONATION](#)

[APPLY FOR A CRIB](#)

[APPLY FOR HEALTHY START](#)





Mary Jean Brown, MS, RNC

816-283-6242 Ext. 248

mjbrown@mchc.net